

KYOTO PREMIUM 2007 Product List





07KJ-01 Hand-painted Yuzen and Urushi Lacquered Jewelry Box (sphere)

Types **A** : Yuzen attached inside
B : Yuzen attached outside

Sizes 150 (diameter)

Materials Cloth : 100% silk
 Body : MDF, hand-painted lacquer

Processes design, hand-painted Yuzen dyeing, lacquer by Kimekomi (lacquer attached textile) (Japan)



07KJ-02 Hand-painted Yuzen and Urushi Lacquered Jewelry Box (square)

Types **A** : Yuzen attached inside
B : Yuzen attached outside

Sizes **S** : W115, D115, H115
M : W180, D180, H60
L : W350, D350, H150

Materials Cloth : 100% silk
 Body : MDF, hand-painted lacquer

Processes design, hand-painted Yuzen dyeing, lacquer by Kimekomi (lacquer attached textile) (Japan)



07KJ-03 Yuzen Necklace : art to wear' '-L'Univers'-'

Sizes Yuzen ball : 15 (diameter)
 Urushi lacquer ball : 10 (diameter)
 Chain : 1640

Materials Yuzen ball : 100% silk, clay, foam polystyrene
 Urushi lacquer ball : wood

Processes Yuzen ball : design, hand-painted Yuzen dyeing, water repellent finish, cloth rolling (Japan)
 Urushi lacquer ball : ball manufacture, lacquer, finishing process (Japan)

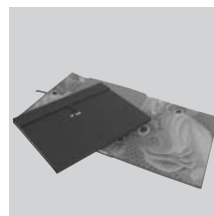


07KJ-04 Yuzen Object : '-L'Univers'-'

Sizes **M1** : W270, D70, H470 (with 1 Yuzen ball)
M3 : W270, D70, H470 (with 3 Yuzen ball)
L : W400, D100, H670 (with 1 Yuzen ball)

Materials Yuzen ball : Cloth : 100% silk, clay, foam polystyrene
 Body : glued wood (MDF/Rose of Sharon)

Processes Yuzen ball : design, hand-painted Yuzen dyeing, water repellent finish, cloth rolling (Japan)
 Body : frame manufacture, urethane coating (Japan)



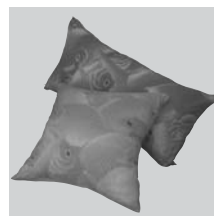
07KJ-05 Yuzen Notebook : Japanese Sense of Beauty -sokoitari-

Patterns **A** : Seabream, **B** : Birds, **C** : Fruits and vegetables

Sizes **B6** : W195, D133 (50 sheets)
B5 : W195, D261 (50 sheets)
A4 : W224, D301 (50 sheets)

Materials Cloth : sleeve : 100% silk
 lining cloth : 100% cotton
 Body : Japanese washi paper

Processes design, template Yuzen dyeing, bookbinding (Japan)



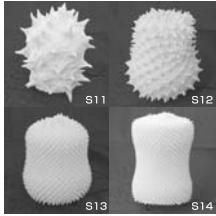
07KJ-06 Yuzen Cushion : Japanese Sense of Beauty -Houryo-

Color reddish orange (**Rd**), black (**BK**)

Sizes **M45** : W450, D450 (Inner padding : 100% small feather)
P70 : W700, D370 (Inner padding : 100% polyester)

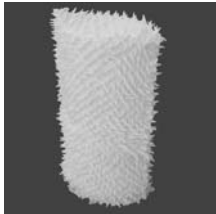
Materials Cloth : Top : 100% silk
 Bottom : 50% cotton, 50% silk
 Inner padding : 100% small feather (M45)
 100% polyester (P70)

Processes design, template Yuzen dyeing, cotton stuffing, sewing (Japan)



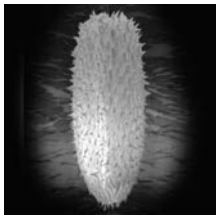
07KT-01 Bai-Shibori Tie Dye Mini Lamp Stand

Shape **S11, S12, S13, S14**
 Sizes: **S11** : 150 (diameter), H210, **S12** : 170 (diameter), H210
S13 : 155 (diameter), H210, **S14** : 125 (diameter), H210
 Lamp Japanese specification : 100V/25W (mouth ring : E-17), bulb attached
 EU specification : 230V/25W (mouth ring : E-14), bulb sold separately
 Main connectors Japanese specification : type A
 EU specification : type C-2
 ※Adoptable to the electrical specifications of any country in the world.
 Materials Lamp cover : 100% silk
 Frame : Japanese washi paper, wood, iron
 Processes design, dyeing, water repellent finish (Japan), shibori tie tying (China),
 frame processing (Japan)



07KT-02 Bai-Shibori Tie Dye Lamp Stand

Lamp Japanese specification : 100V/40W (mouth ring : E-26), bulb attached
 EU specification : 230V/40W (mouth ring : E-27), bulb sold separately
 Mains connectors Japanese specification : type A
 EU specification : type C-2
 ※Adoptable to the electrical specifications of any country in the world.
 Sizes W240, D140, H410
 Materials Lamp cover : 100% silk
 Frame : Japanese washi paper, wood, iron
 Processes design, dyeing, water repellent finish (Japan), shibori tie tying (China),
 frame processing (Japan)



07KT-03 Bai-Shibori Tie Dye Lantern Pendant Lamp

Lamp Japanese specification : 100V/60W (mouth ring : E-26), bulb attached
 EU specification : 230V/60 W (mouth ring : E-27), bulb sold separately
 Mains connectors Japanese specification : Seiling for hanging
 EU specification : no mains connector (power distribution work
 required)
 ※Adoptable to the electrical specifications of any country in the world.
 Sizes 280 (diameter), H970
 Materials Lamp cover : 100% silk
 Frame : Japanese washi paper, wood, iron
 Processes design, dyeing, water repellent finish (Japan), shibori tie tying (China),
 frame processing (Japan)



07KB-01 New Material Cushion : ICE & SHERBET

Color white (**Wh**)
 Sizes **S30** : W300, D300
M50 : W500, D500
P60 : W600, D300
 Materials Cloth : 100% silk
 Inner padding : special material made of 100% poly lactic acid fibers
 Processes design, dyeing, weaving, sericin fixing process, water repellent finish,
 cotton stuffing, sewing (Japan)



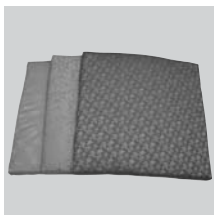
07KB-02 New Material Cushion : WHITE on WHITE

Color white (**Wh**)
 Sizes **S30** : W300, D300
M50 : W500, D500
P60 : W600, D300
 Materials Cloth : 55% special bamboo fiber, 45% silk
 Inner padding : special material made of 100% poly lactic acid fibers
 Processed part : 100% paper
 Processes design, dyeing, weaving, water repellent finish, cotton stuffing,
 sewing (Japan)



07JS-01 Yuzen-Kinsai File Case

Patterns **A** : Plum, **B** : Autumn leaves, **C** : Flowing water
 Size W310, H430
 Materials Cloth : 100% silk
 Body : paper
 Ribbon : 100% rayon
 Processes design, dyeing, gold foil attaching, binding (Japan)



07PL-01 Floor Cushion made with Traditional Patterns : OSHIKI

Patterns **A** : Sou-o-mon **B** : Hanatawaku **C** : Yamada **D** : Sasazuru
E : Araiso
 Colors pink (**Pi**), orange (**Or**), purple (**Pu**), beige (**Be**)
 Size W650, D650, H30
 Materials Cloth : side textile : 100% cotton
 Inner padding : low-backlash polyurethane, rolled cotton (90% cotton, 10% polyester)
 Processes design, weaving, water repellent finish, cotton stuffing, sewing (Japan)



07HS-01 Hand-attached Nishiki Silk Textile Cushion Cover : RINPA

Patterns (colors) **No.01** : RINPA NAGARE (gold)/S30, **No.02** : RINPA NAGARE (bister gold)/S30
No.03 : RINPA MIZU (white)/S30, P60
 /size **No.04** : RINPA TSUTA (gold and silver)/S30, P60
No.05 : RINPA TSUTA (gold, silver and green)/ S30, P60
 Sizes **S30** : W300, D300
P60 : W600, D300
 Materials 100% cotton, except for the gold and silver thread
 Processes design (Japan), weaving (China), water repellent finish, sewing (Japan)

Separate sale **07HS-IN Inner Cotton Stuffing**



07HS-02 Hand-attached Nishiki Silk Textile Cushion Cover : WABI

Patterns (colors) **No.01** : WABI USAGI (silver), **No.02** : WABI SASA (bister gold)
No.03 : WABI FUJI (bister gold), **No.04** : WABI KIRI (bister gold)
No.05 : WABI USAGI (bister gold)
No.06 : WABI USAGI (bister gold and beige)
No.07 : WABI ICHIMATSU (bister gold)
No.08 : WABI ICHIMATSU (bister gold and beige)
 Size S30 : W300, D300
 Materials 100% cotton, except for the gold and silver thread
 Processes design (Japan), weaving (China), water repellent finish, sewing (Japan)

Separate sale **07HS-IN Inner Cotton Stuffing**



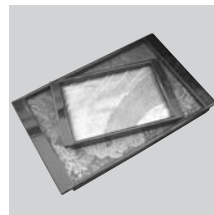
07HS-03 Nishiki Silk Textile Cushion Cover

Patterns (colors) **No.01** : RINPA NAGARE (gold)/L65, **No.02** : RINPA NAGARE (bister gold)/L65
No.03 : RINPA MIZU (white)/M50, L65
 /size **No.04** : RINPA TSUTA (gold and silver)/L65
No.05 : RINPA NAMI (black)/M50, L65, **No.06** : WABI USAGI (silver)/L65
No.07 : WABI SASA (bister gold)/L65
No.08 : WABI KIRI (bister gold)/M50, L65
 Sizes **M50** : W500, D500, **L65** : W650, D650
 Materials 100% silk, except for the gold and silver thread
 Processes design (Japan), weaving (China), water repellent finish, sewing (Japan)

Separate sale **07HS-IN Inner Cotton Stuffing**

Separate sale **07HS-IN Inner Cotton Stuffing**

Sizes **S30** : W300, D300
M50 : W500, D500
P60 : W600, D300
L65 : W650, D650
 Materials **F** : 100% small feather (outer textile 100% cotton)
Pe : 100% polyester (outer textile 100% cotton)
 Processes weaving, cotton stuffing, sewing (Japan)



07HS-04 Nishiki Silk Textile Tray

Sizes (patterns) **L** : W600, D380, H28 (WABI USAGI)
M : W450, D285, H28 (WABI KIRI)
S : W300, D190, H28 (WABI NAGARE)
 Materials Body : MDF
 Cloth : 100% silk, except for the gold and silver thread
 Processes Cloth : design (Japan), weaving (China), water repellent finish (Japan)
 Body : production, cashew oil lacquer application (Japan)



07HS-05 Nishiki Silk Textile Picture Frame

Sizes **L** : W940, D24, H480 (**No.01** : RIMPA TSUTA, **No.02** : WABI KIRI (patterns) **M** : W470, D24, H480 (**No.03** : RIMPA IROIRO, **No.04** : WABI IROIRO)
 Materials Body : MDF, clear acrylic plate
 Cloth : 100% silk, except for the gold and silver thread
 Processes Cloth : design (Japan), weaving (China)
 Body : producing, cashew oil lacquer application (Japan)



07YM-01 Nishijin-Kinran Cushion Cover

Patterns **No. 01** : no pattern **No. 02** : with pattern
 Colors black (**Bk**), blue (**Bu**), purple (**Pu**)
 Size **M45** : W450, D450
 Materials 50% silk, 50% rayon
 Processes design, weaving, water repellent finish, sewing (Japan)

Separate sale **07YM-IN Inner Cotton Stuffing**

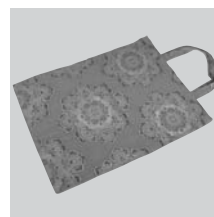
Separate sale **07YM-IN Inner Cotton Stuffing**

Size **M45** : W450, D450
 Materials **F** : 100% small feather (outer textile 100% cotton)
Pe : 100% polyester (outer textile 100% polyester)
 Processes weaving, cotton stuffing, sewing (China)



07YM-02 Nishijin-Kinran Notebook

Colors black (**Bk**), blue (**Bu**), purple (**Pu**)
 Size **B5** : W190, H265 (100 sheets)
 Materials Cloth : 50% silk, 50% rayon
 Body : paper
 Processes design, weaving, bookbinding (Japan)



07YM-03 Nishijin-Kinran Tote Bag

Patterns **No. 03** : with gold foil, **No. 04** : without gold foil
 Colors black (**Bk**), blue (**Bu**), purple (**Pu**)
 Size W300, H380 (no width)
 Materials Outer material : 50% silk, 50% rayon
 Inner material : 100% cotton
 Processes design, weaving, sewing (Japan)



07YT-01 Cotton Chirimen Napkin and Napkin Rings (6 sets)

Colors ecru (**Ec**), acie (**Ac**)
 Size 500 × 500
 Materials Cloth : 100% cotton
 Ring : Japanese washi paper
 Processes Cloth : dyeing, weaving, water repellent finish, sewing (Japan)
 Ring : design, processing (Japan)



07YT-02 Cotton Chirimen Table Runner

Colors ecru (**Ec**), acie (**Ac**)
 Size 2600 X 400
 Material 100% cotton
 Processes dyeing, weaving, water repellent finish, sewing (Japan)



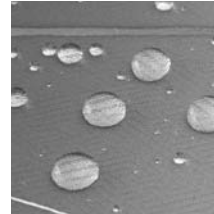
07YT-03 Cotton Chirimen Luncheon Mat

Colors ecru (**Ec**), acie (**Ac**)
 Size 400 X 300
 Material 100% cotton
 Processes dyeing, weaving, water repellent finish, sewing (Japan)



07YT-04 Cotton Chirimen Towel

Color ecru (**Ec**), acie (**Ac**)
 Sizes **Bt** : 2000 X 1000 (bath towel)
 Ft : 900 X 350 (face towel)
 Ht : 300 X 300 (hand towel)
 Material 100% cotton
 Processes dyeing, weaving, sewing (Japan)



All products processed with water repellent finish are used PEARLTONE HG Finish.

PEARLTONE HG Finish : an exclusive processing technique owned by Pearlstone Co., Ltd. The process enables water repellence and soiling resistant and is effective on the material surface as well as deep inside. Materials protected with this process maintain their original color, gloss, and air permeability, and are resistant to soiling and shrinkage.

*Product size specifications shown here are all in millimeters.