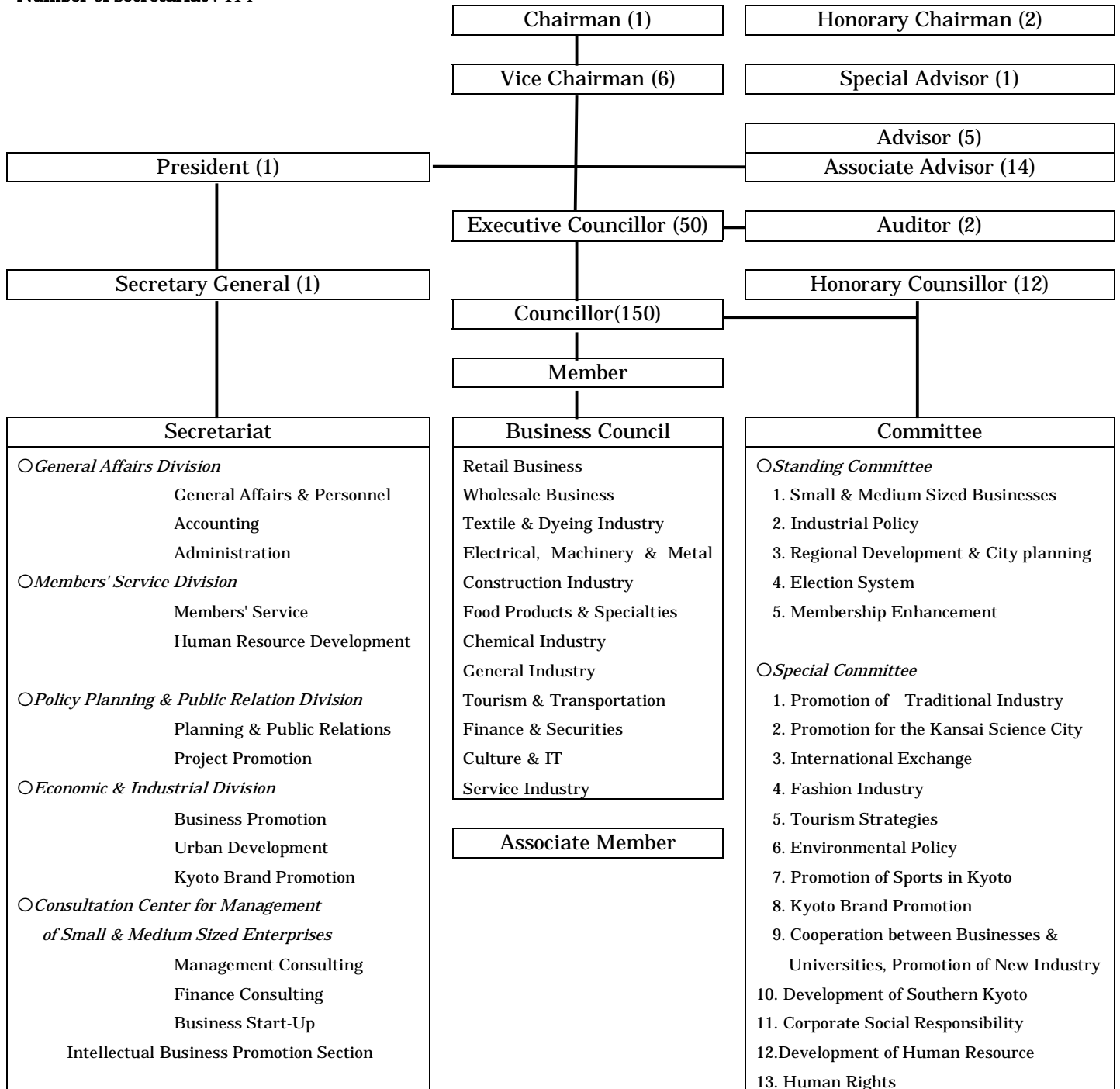


Organization Chart (as of April, 2010)

Establishment October 1882
Legal Status Special authorized corporation in conformity with Chamber of Commerce and Industry Law
Membership Approx. 11,000 firms
Chairman Yoshio TATEISI (Chairman of the Board, OMRON CORPORATION)
Vice-Chairmen Yasuo KASHIHARA (President, The Bank of Kyoto, Ltd.)
 Takao WATANABE (President, Nishijin Textile Industrial Association)
 Hidetoshi YAJIMA (Senior Corporate Advisor, SHIMADZU CORPORATION)
 Yoshikata TSUKAMOTO (Representative director and CEO, WACOAL HOLDINGS CORP)
 Tazuko TANAKA (Chairman of the Board, CARRIERE INTERNATIONAL CORPORATION)
 Makoto KAWAMURA (Chairman, KYOCERA Corporation)
President Tuneoki OKUHARA
Number of councillors : 143
Number of secretariat : 114



International Sister Chambers

Chambre de commerce et d'industrie de Paris (since 15th Jan. 1988)
 Camera di Commercio Industria Artigianato e Agricoltura di Firenze (since 22nd Oct. 2005)

Typical Characteristics of Kyoto Industries and Corporations

<< Basic Data and Share >>

| | Kyoto Prefecture | Kyoto City | Nation wide | Percentage of Japan (%) | Rank out of all 47 Prefecture |
|--|------------------|------------|-------------|-------------------------|-------------------------------|
| Population (million) References: Census of Fiscal 2006 (as of October 1) | 2.6 | 1.4 | 127.7 | 2.07 | 13 |
| Shipment Value of Manufacturing Products Amount (Hundred Million US\$) References: Industrial Statistics of Fiscal 2006 | 5,164 | 2,185 | 305,664 | 1.68 | 22 |
| Added Value Amount (Hundred Million US\$) References: Industrial Statistics of Fiscal 2006 | 2,154 | 967 | 10,446 | 2.06 | 18 |
| Income of Residents of Prefecture (Hundred Million US\$) References: Industrial Statistics of Fiscal 2005 | 7,441 | | 377,516 | 1.97 | 13 |
| Number of Foreign Residents References: The number of foreign residents as of the end of 2007 (Immigration Bureau) | 53,295 | | 2,152,973 | 2.47 | 11 |

(US\$ = ¥103)

<< Industrial Structure of Kyoto (classified by industry) >>

