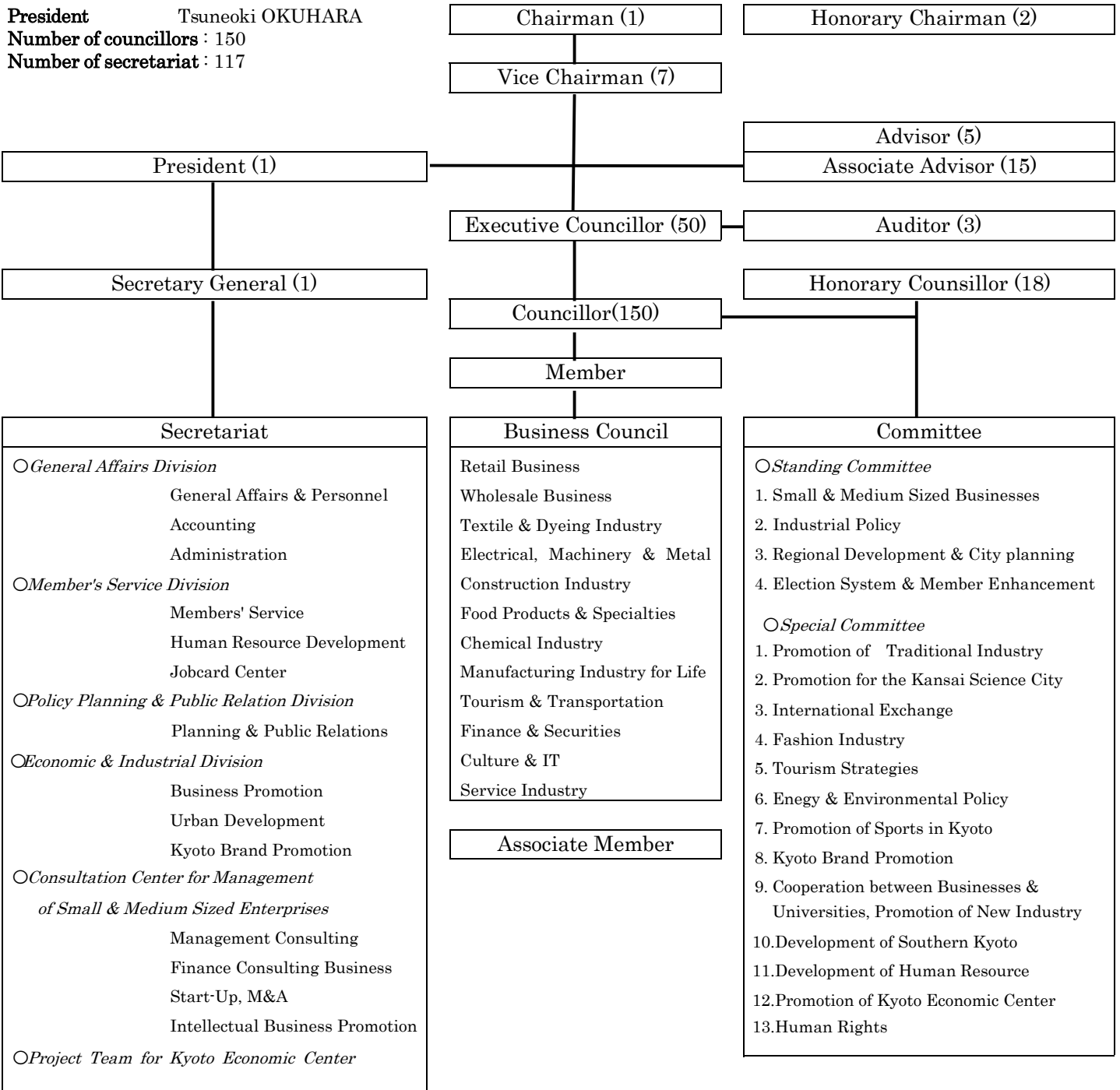


Organization Chart''(as of November, 2016)

Establishment	October 1882
Legal Status	Special authorized corporation in conformity with Chamber of Commerce and Industry Law
Membership	Approx. 12,000 firms
Chairman	Yoshio TATEISHI (Honorary Chairman , OMRON CORPORATION)
Vice-Chairmen	Yasuo KASHIHARA (Director and Executive Advisor, The Bank of Kyoto, Ltd.) Yoshikata TSUKAMOTO (President, WACOAL HOLDINGS CORP.) Atsushi HORIBA (Chairman, President & CEO, HORIBA,LTD.) Shigehiko HATTORI (Senior Corporate Advisor, SHIMADZU CORPORATION) Tetsuo KUBA (Chairman of the Board, KYOCERA Corporation) Uhee WAKABAYASHI (Director Advisor, WAKABAYASHI BUTSUGU MFG.CO.,LTD.) Kanejiro NOSE (President, KEIMEI-SHOJI,Ltd.)



International Sister Chambers

Chambre de commerce et d'industrie de Paris (since 15th Jan. 1988)

Camera di Commercio Industria Artigianato e Agricoltura di Firenze (since 22nd Oct. 2005)